

# Certificate I in Access to Vocational Pathways

Starting you  
on the road to  
employment  
with the skills  
you need.

## About the course

The FSK10113 Certificate I in Access to Vocational Pathways allows individuals to acquire and develop basic skills and knowledge in order to build a vocational pathway.

**Duration:** Classroom Based - delivered in up to 800 hours.

## This course includes

- Using basic strategies for work related learning
- Using whole numbers and money
- Engaging in basic spoken exchanges at work
- Reading and responding to basic information

## Entry requirements

No entry requirements for this qualification  
Students should have ACSF level 1 written and spoken English and numeracy to be able to meet the foundational skills requirements.

## Where to from here?

Students who have completed this course can continue to build upon the basic skills they have acquired and use them as a foundation for further learning and training.

## Training for You

To find out more about our courses and how we can help you on your journey contact us at the below:

**Phone** 1800 021 560

**Email** [info@maxsolutions.edu.au](mailto:info@maxsolutions.edu.au)

**Web** [maxsolutions.com.au/training](http://maxsolutions.com.au/training)

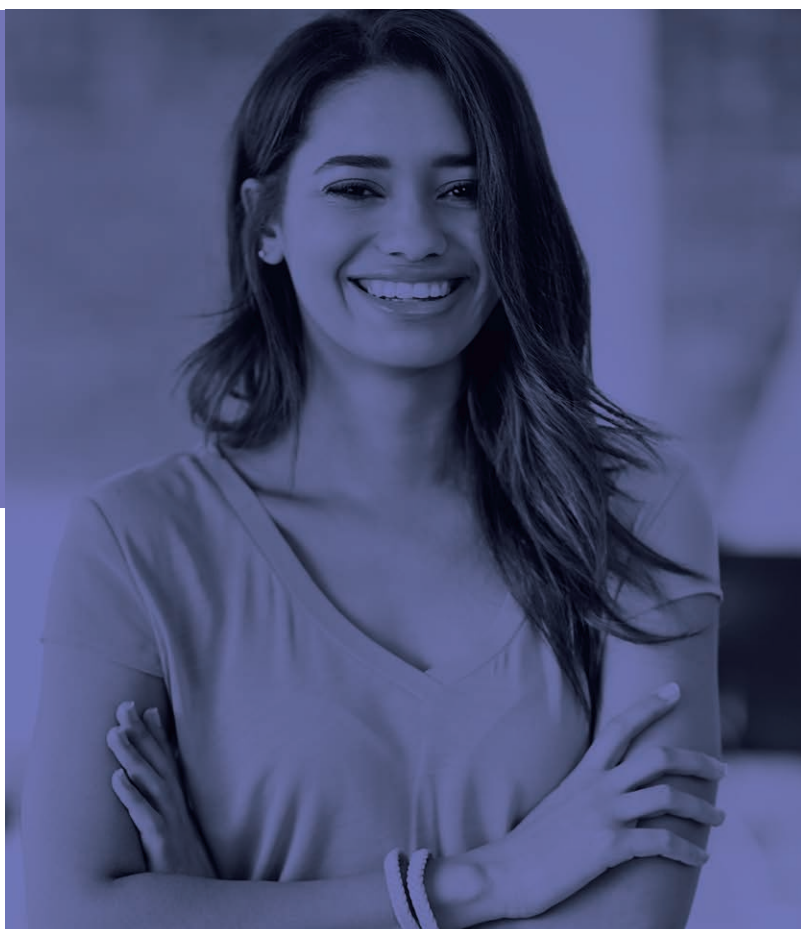
[maxsolutions.com.au/training](http://maxsolutions.com.au/training)

Follow us on [Facebook.com/maxsolutionsau](https://www.facebook.com/maxsolutionsau)

MAX Solutions (RTO: 0667)



**MAX Solutions**



## Certificate I in

# Access to Vocational Pathways



MAX Solutions

### Recognition of Prior Learning (RPL) and Credit Transfers (CT)

Learners will be provided information about RPL and Credit Transfers prior to or upon enrolment and can discuss their application with their Trainer.

You can learn more about the RPL process at [www.maxsolutions.com.au/training](http://www.maxsolutions.com.au/training)

### Unique Student Identifier (USI)

All students undertaking Nationally Recognised Training in Australia will need to have a USI, Unique Student Identifier.

You will need your USI in order to apply to enrol for training.

Visit [www.usi.gov.au](http://www.usi.gov.au) for more information.

### Units of Competency

#### Core Units

- FSKDIG01 Use digital technology for basic workplace tasks
- FSKLRG04 Use basic strategies for work-related learning
- FSKNUM03 Use whole numbers and money up to one thousand for work
- FSKNUM04 Locate, compare and use highly familiar measurements for work
- FSKOCM02 Engage in basic spoken exchanges at work
- FSKRDG04 Read and respond to basic workplace information
- FSKWTG03 Write basic workplace information

#### Elective Units

- You will need to select up to 4 industry related units.

#### Placement

You may also be required to do up to 120 hours of vocational placement depending on the elective units you select.

## More Information

For delivery locations, funding information, further courses and information on our policies and procedures, please visit our website or contact our team.

**Phone** 1800 021 560

**Email** [info@maxsolutions.edu.au](mailto:info@maxsolutions.edu.au)

**Web** [maxsolutions.com.au/training](http://maxsolutions.com.au/training)



MAX Solutions



NATIONALLY RECOGNISED  
TRAINING